
ACEI Member Benefits



ACEI Vision:



A future shaped by social and environmentally responsible design.

ACEI Mission:



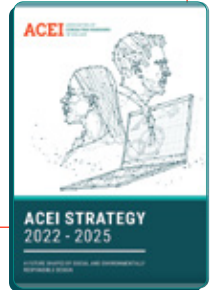
To support a vibrant consulting engineering community, within which member firms can grow successful businesses that deliver sustainable engineering solutions for the benefit of humankind.

ACEI Strategy 2022 – 2025:



Available to download from our website.

Three strategic pillars: Championing Sustainability; Delivering Members Services; Enhancing the Profession; underpinned by Strong Corporate Governance.



TOP 10 ACEI Member Benefits



Client Liaison / Engagement:



Lobbying / Advocacy:



Publications



Events and Courses



Awards

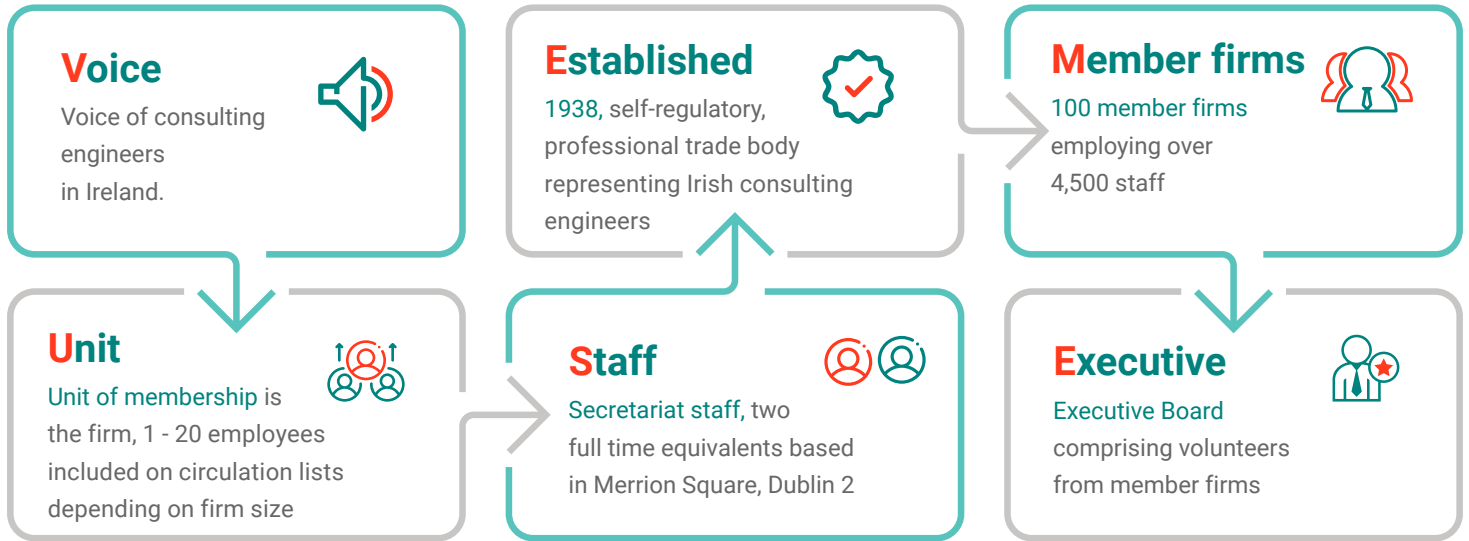


Governance

Join the ACEI and you will receive:

- 1 Representation and assistance at local level with contracting authorities and clients.
- 2 The latest advice and practice notes in relation to the operating in the industry
- 3 Expertise from the Executive Board, other peers and the Secretariat on business challenges faced including: Professional Indemnity Insurance (PII); procurement / tender challenges; environmental responsibility; digitalisation
- 4 FConsEI and RConsEI status for suitably qualified staff enhancing your organisation's reputation with clients.
- 5 The option to join technical committees focused on addressing member challenges in the sector. These include Civil; Structures; M&E; H&S; CPD; Risk/PII/Procurement; BIM; Building Control; Sustainability
- 6 Receive latest business insight on all issues through regular communications about ACEI work on influencing policy, regulation and practice
- 7 Register for international initiative Pledge to Net Zero and obtain support for reducing firm carbon emissions
- 8 Access to EFCA (European Federation) and FIDIC (International Federation) advice, publication and events.
- 9 Obtain discounts on bespoke CPD courses, H&S, Leadership, Graduate Development; and seminars / webinars
- 10 Receive updated Conditions of Engagement (COEs) published; BC(A)R & other essential certs

ACEI - Overview



Unit of members is the firm

ACEI Membership Fees

The Association membership subscription formula is based on:

1. Payment of a subscription fee for each ACEI Fellow Professional Consulting Engineer (FConsEI) listed in the company (must be at least one FConsEI per firm).
2. Payment of a subscription fee for each ACEI Registered Professional Consulting Engineer (RConsEI) listed in the company (no minimum number of RConsEI required).
3. Plus a payment in respect of all other staff, in any role, up to a ceiling of 60 employees.

ACEI Annual Subscription rates:

- ACEI Fellow Professional Consulting Engineers (FConsEI): €449.00 per person
- ACEI Registered Professional Consulting Engineers (RConsEI): €239.00 per person
- Other employees including engineers, technical and administrative: €134.00 per person (up to a max of 60)
- Firms who apply for membership any time in a calendar year will have one third (33.33%) of the above rates applied.
A two thirds rate (66.67%) will apply in the following calendar year. From the third year of membership the full subscription applies.
- This discount only relates to membership applications to end of December in any year.

Membership Applications

Information on membership requirements, the application process and related forms is available in the membership application section on the ACEI Website. Each firm applying for MConsEI (firm) membership must also include an FConsEI (Fellow Professional Consulting Engineer) application at the same time. The firm is the unit of membership, the FConsEI is the representative. An administrative contact in the firm also receives ACEI emails and newsletters.

Contact Louise Patterson at info@acei.ie for any membership queries.

ACEI ASSOCIATION OF
CONSULTING ENGINEERS
OF IRELAND

